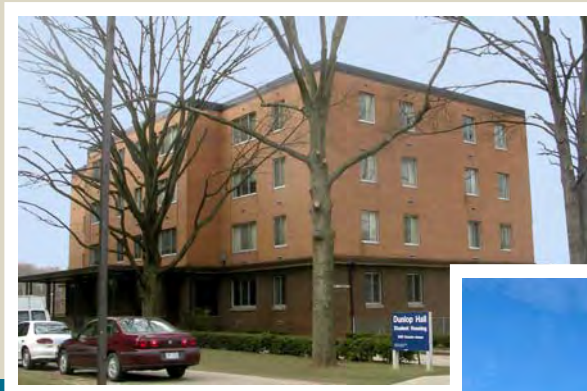




Student/Resident Housing Information

Dunlop Hall



Jefferson Place



Maier Village

Charleston Medical Center
Housing Corporation
Charleston, West Virginia

Maier Village

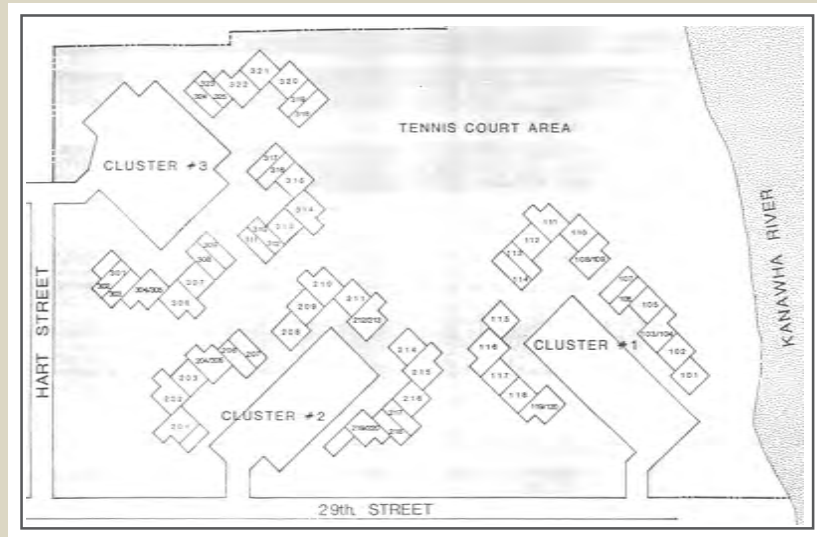
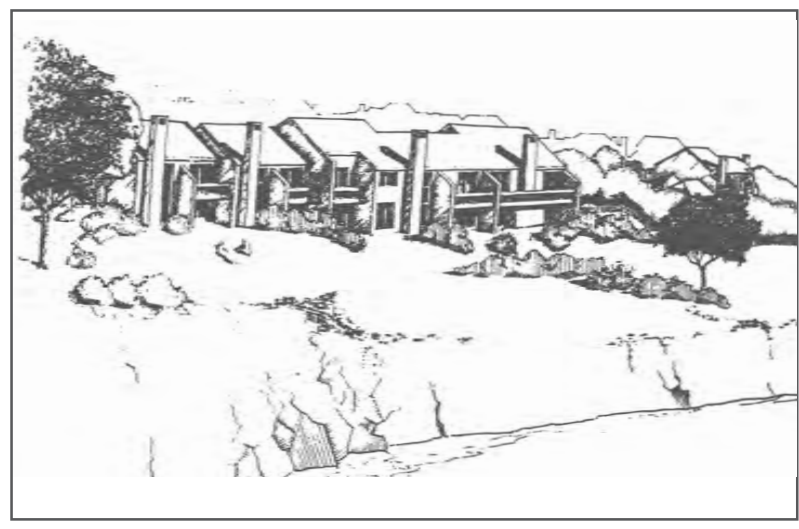


The Charleston Medical Center Housing Corporation operates 65 one, two and three bedroom townhouse units that are located on the Kanawha River two blocks west of the Memorial Hospital of the Charleston Area Medical Center. The townhouses are individualized through the use of a variety of interior arrangements. Many units include fireplaces and balconies. Children are welcome. Pets are not permitted. The development contains a children's playground and two tennis courts. The apartments are available to students and residents of WVU/CAMC and are limited to the time period coinciding with their educational experience.

Units in Maier Village are unfurnished and require a one-year lease. Kitchens include refrigerator, self-cleaning oven range, dishwasher and disposal. Blinds have been installed in all windows, however the tenant must provide the sliding glass door treatment. Each unit contains a washer and dryer. A community building is available for the storage of bicycles and lawn furniture. All utilities are included in the rent except electric. Cable TV, telephone and Internet service are the responsibility of the individual tenants. Adequate parking is available in the parking areas adjoining the complex.

Charleston Medical Center Housing Corporation

Maier Village



Charleston Medical Center Housing Corporation

Maier Village



ONE BEDROOM (2nd. floor plan)

UNIT NOS. 120, 305.

REVERSED PLAN

UNIT NOS. 104, 109, 205, 213, 220



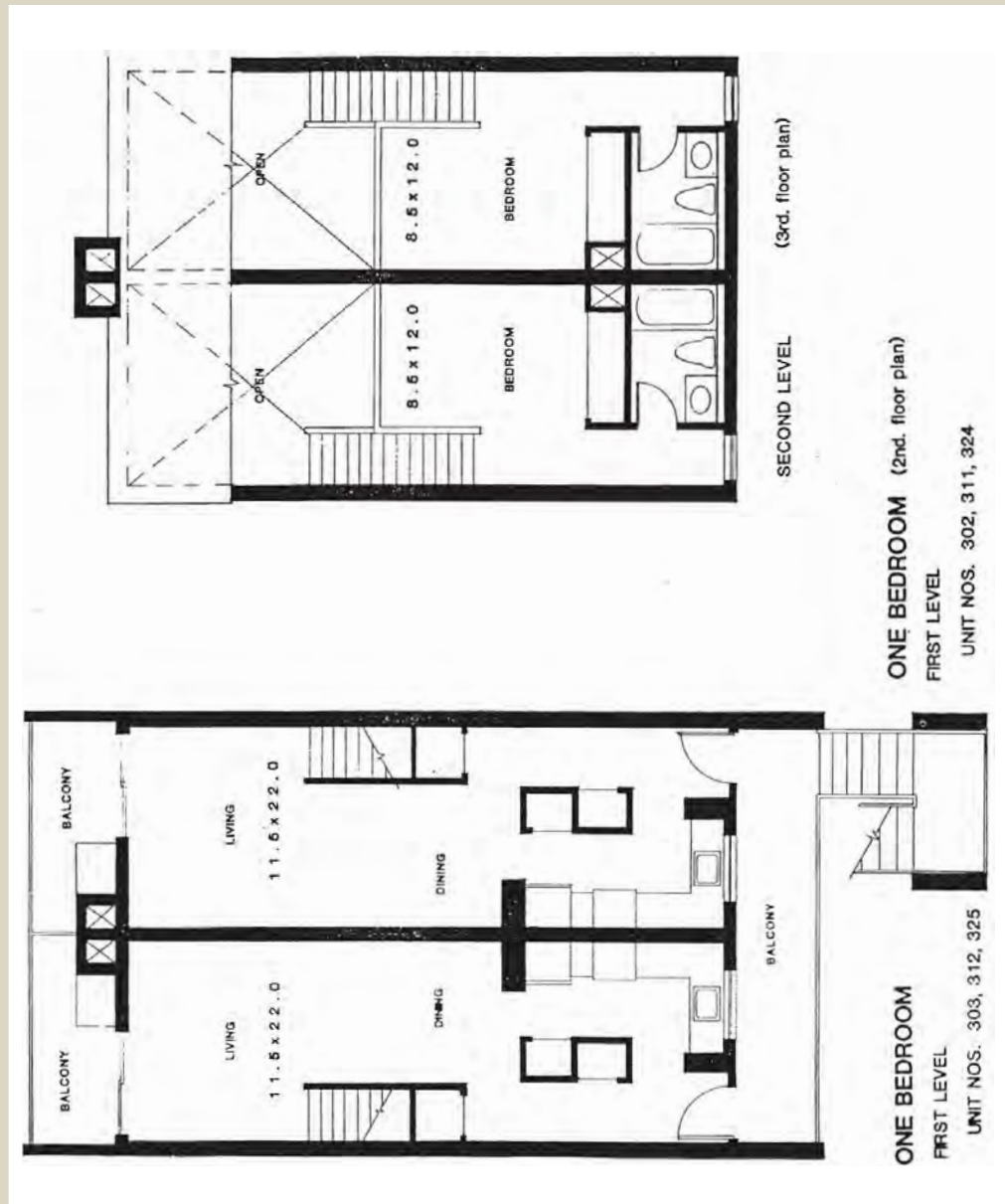
ONE BEDROOM (1st. floor plan)

UNIT NOS. 119, 304.

REVERSED PLAN

UNIT NOS. 108, 204, 212, 219.

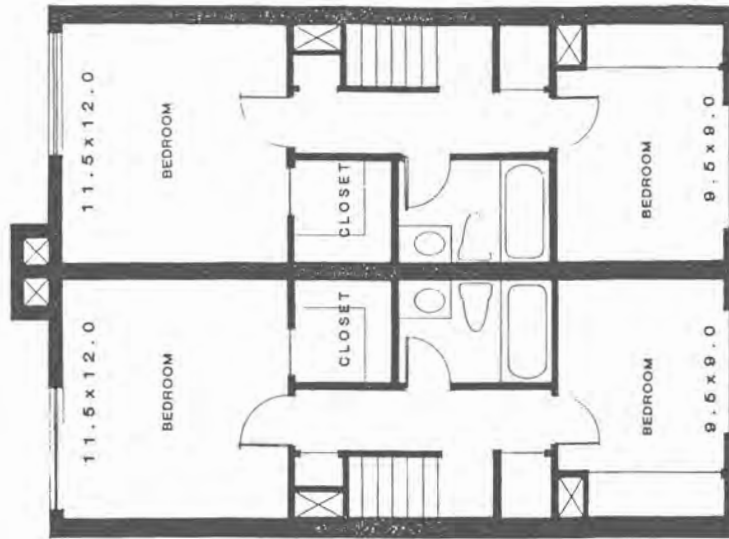
Maier Village



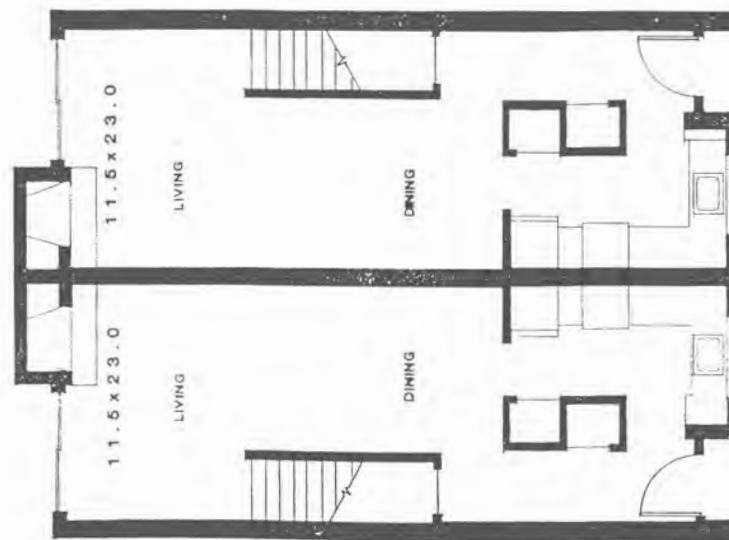
Maier Village



Maier Village

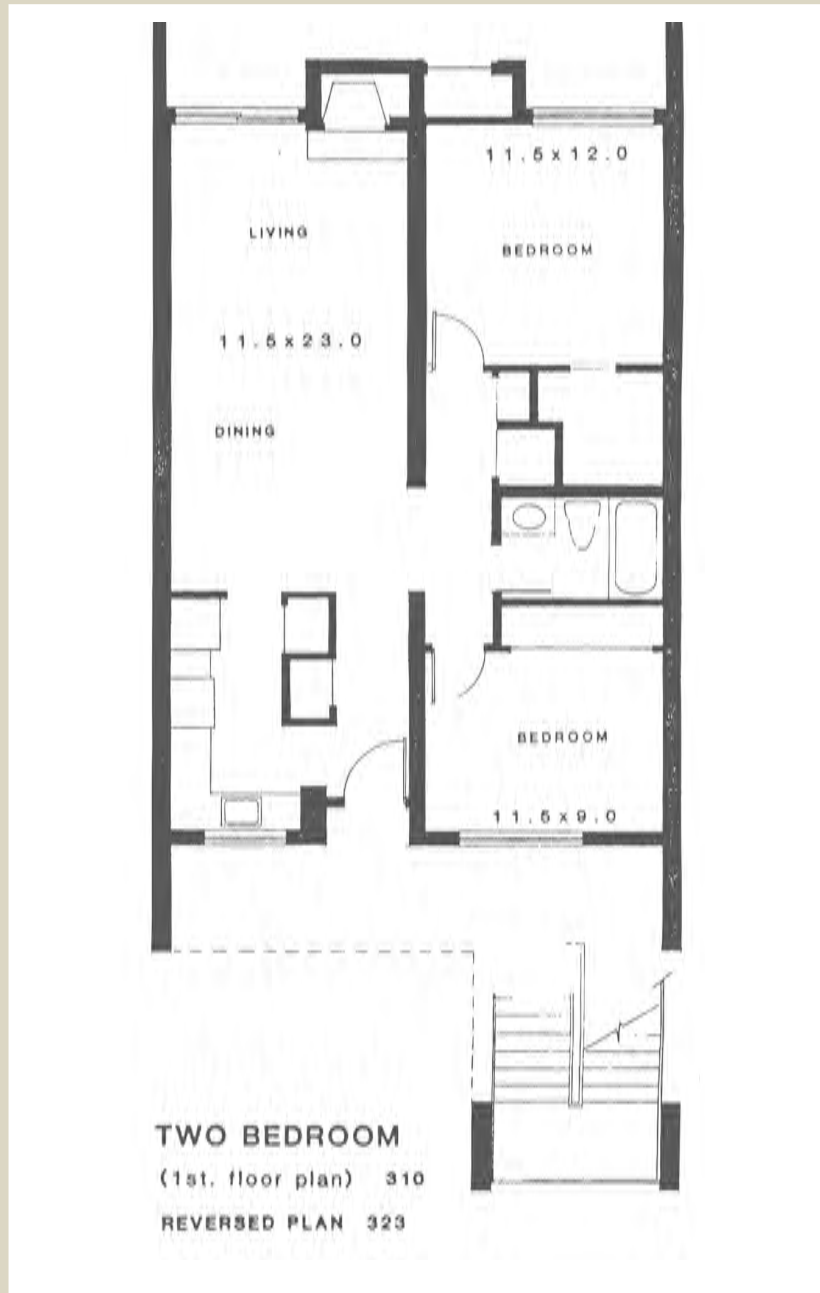


TWO BEDROOM (2nd. floor plan)
 units w/ balconies 106, 113, 316, 318
 units w/ balconies 107, 114, 317, 319



TWO BEDROOM (1st. floor plan)
 UNIT NOS. 107, 113, 207, 218, 308, 316, 318.
 114, 206, 217, 309, 317, 319.

Maier Village



Charleston Medical Center Housing Corporation

Maier Village



Maier Village



TWO BEDROOM (1st. floor plan)
HANDICAPPED UNIT NO. 301



ONE BEDROOM (1st. floor plan)
HANDICAPPED UNIT NO. 103.

Maier Village



Charleston Medical Center Housing Corporation

Dunlop Hall



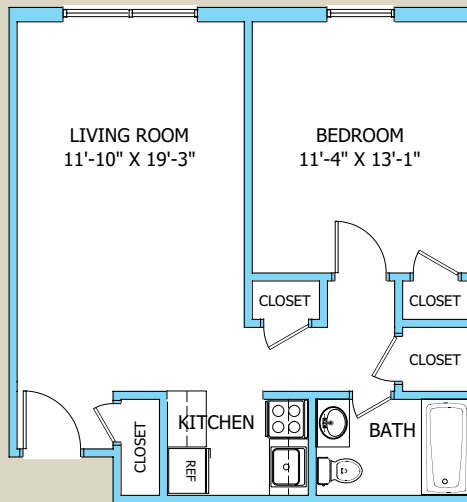
The Charleston Medical Center Housing Corporation operates 32 efficiency, one, two and three bedroom apartments that are located in Dunlop Hall on the grounds of the Memorial Hospital campus of the Charleston Area Medical Center. The apartments are available to students and residents of WVU/CAMC and are limited to the time period coinciding with their educational experience. Children are welcome. Pets are not permitted.

The first floor of Dunlop Hall is reserved for transient students doing rotations at CAMC. These efficiency and three bedroom units are complete with major items of furniture. Linens and kitchen utensils are not furnished. The second, third and fourth floors contain one and two bedroom units that are rented on a one-year basis. Rental furniture for these upper floor units is available for an additional fee of \$25.00/month for a one bedroom and \$30.00/month for two bedroom units. Blinds are provided as window treatment throughout the apartments. Coin operated washers and dryers are located on the lower floor of the building.

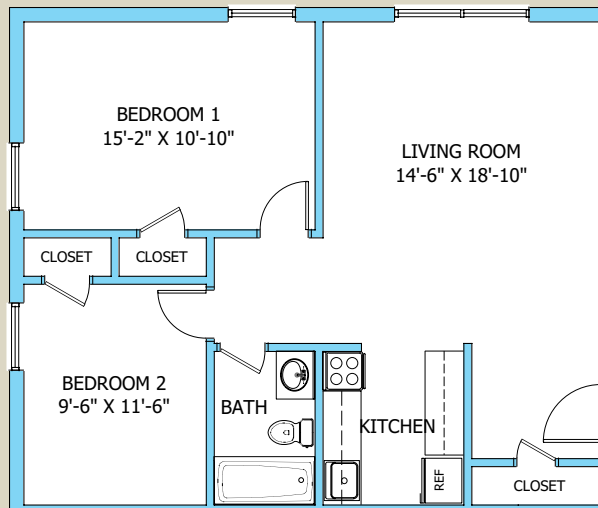
A fenced green space is provided for your enjoyment. Tenant-owned equipment (grills, tables, chairs, toys, etc.) may be used in this area, but must be stored when not in use. There is also a spacious lounge on the lower floor for tenant use. A storage locker approximately 4'x6' is provided for each apartment in a separate locker room. Each apartment is equipped with basic television cable hookup, and with the exception of telephone installation and service, rent includes all utilities. Adequate parking space is available in the parking garage adjoining the building property.

Charleston Medical Center Housing Corporation

Dunlop Hall



DUNLOP HALL 1 BEDROOM



DUNLOP HALL 2 BEDROOM

Jefferson Place



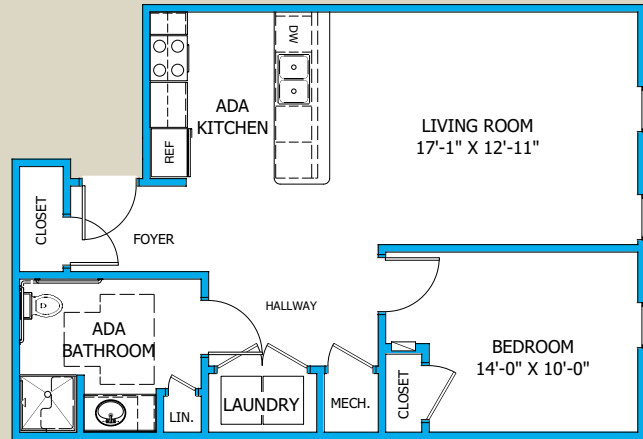
The Charleston Medical Center Housing Corporation operates 24 one, two and three bedroom apartments that are located at the corner of Quarrier and Morris Streets, one block south of the General Hospital campus of the Charleston Area Medical Center. The apartments are available to students and residents of WVU/CAMC and are limited to the time period coinciding with their educational experience. Children are welcome. Pets are permitted with the prior approval of the Housing Corporation Management and prior to lease signing.

Units in Jefferson Place are unfurnished and require a one-year lease. Selected one and two bedroom apartments are handicap accessible. All units have fully furnished kitchens including range and oven, microwave oven, refrigerator, dishwasher and disposal. Each unit contains a full size washer and dryer. Cable TV, telephone and Internet service are the responsibility of the individual tenants. All utilities are included in the rent except electric. The two and three bedroom units both have two full baths. Blinds have been installed in all windows. There is a large lounge on the second floor available to all tenants. Parking is available on site and is gated with card access. The building is also designed with a card access security system.

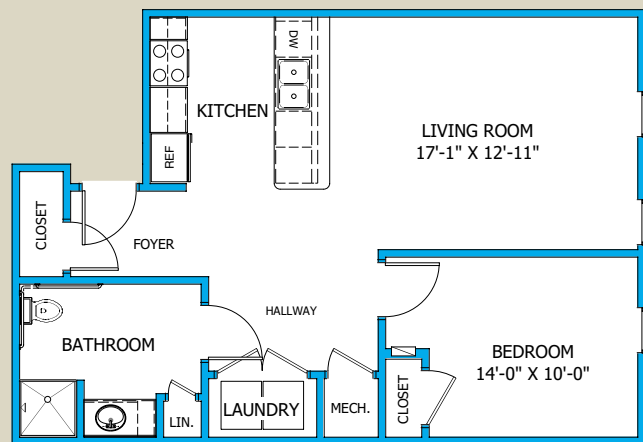
Jefferson Place is conveniently located within easy walking distance of Charleston Town Center Mall, the Clay Center for the Arts and Sciences, Capitol Market (farmer's market), Appalachian Power Park (minor league baseball) and a number of local restaurants.

Charleston Medical Center Housing Corporation

Jefferson Place

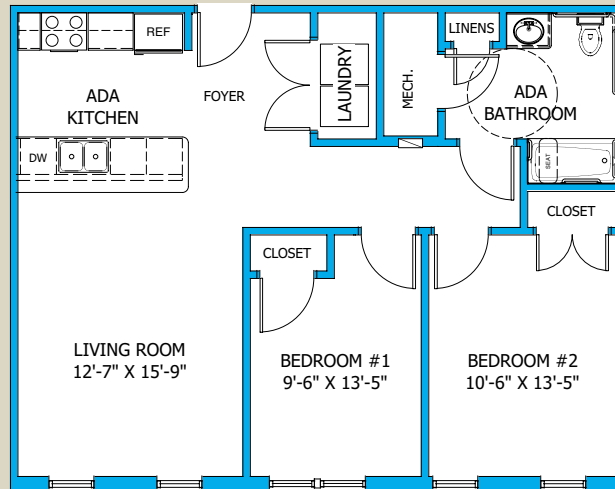


1 BEDROOM APARTMENT
ADA ACCESSIBLE
734 SF



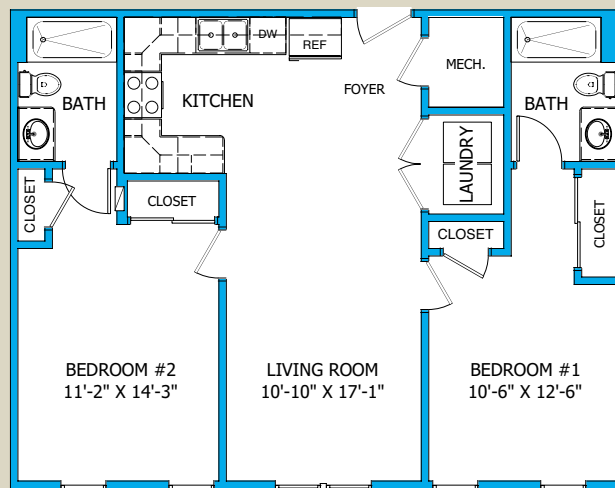
1 BEDROOM APARTMENT
734 SF

Jefferson Place



2 BEDROOM APARTMENT

ADA ACCESSIBLE
858 SF

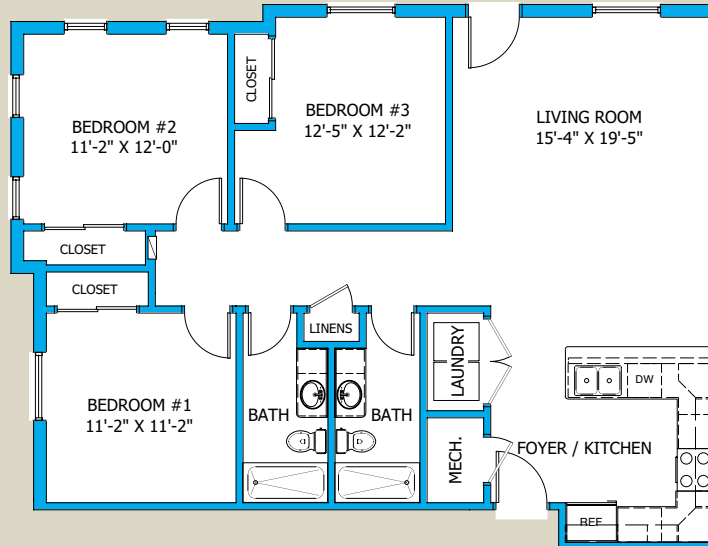


2 BEDROOM APARTMENT

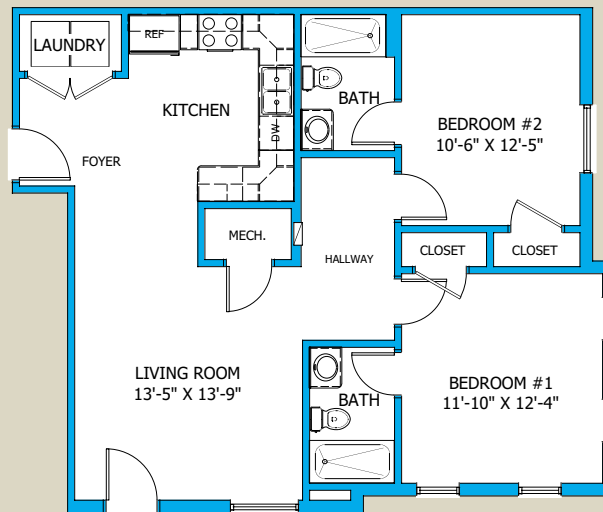
858 SF

Charleston Medical Center Housing Corporation

Jefferson Place



3 BEDROOM APARTMENT
CORNER UNITS
1146 SF



2 BEDROOM APARTMENT
CORNER UNITS
886 SF

Charleston Medical Center Housing Corporation
110 29th St. SE • Charleston, WV 25304 • (304) 345-0171